

PROJ. NO. - F-026-1 (27)

FRAMING PLAN

Bancroft & Martin Inc.  
South Portland, Maine

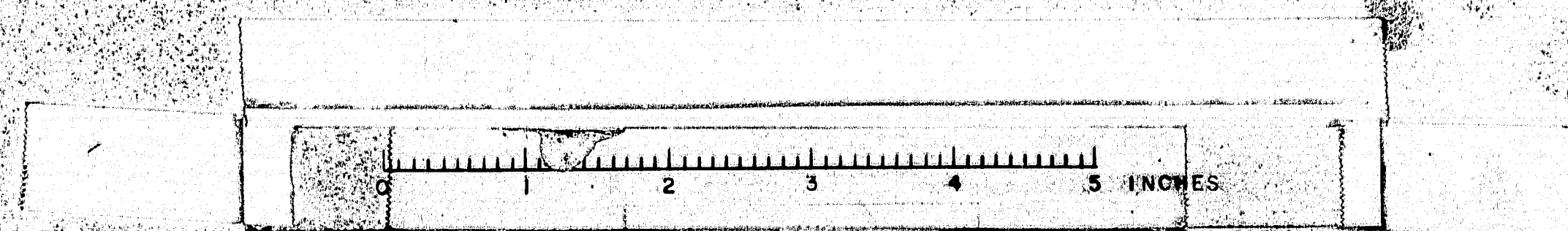
CENTER STREET CONNECTION  
OVER U.S. ROUTE 1  
BATH, MAINE

CUSTOMER REED & REED  
DESIGNER M. S. H. C.

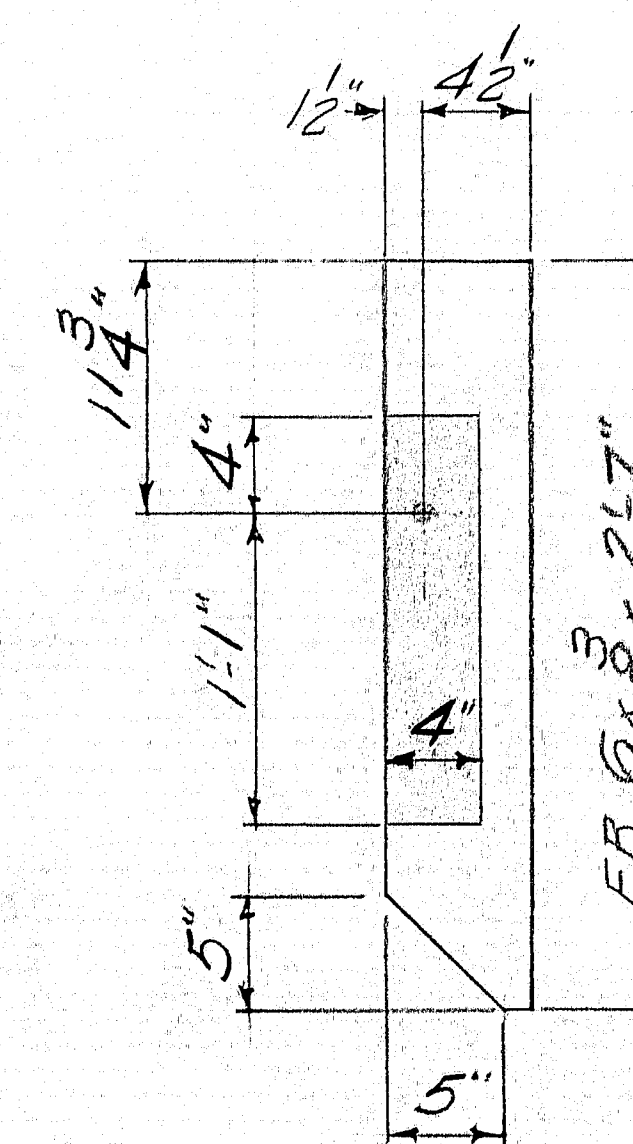
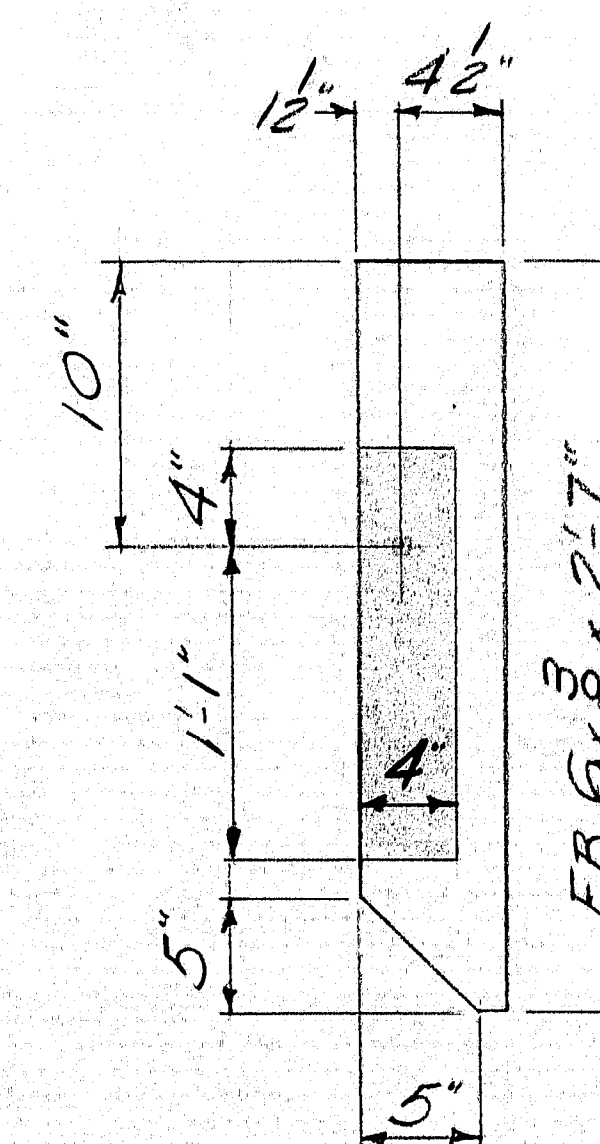
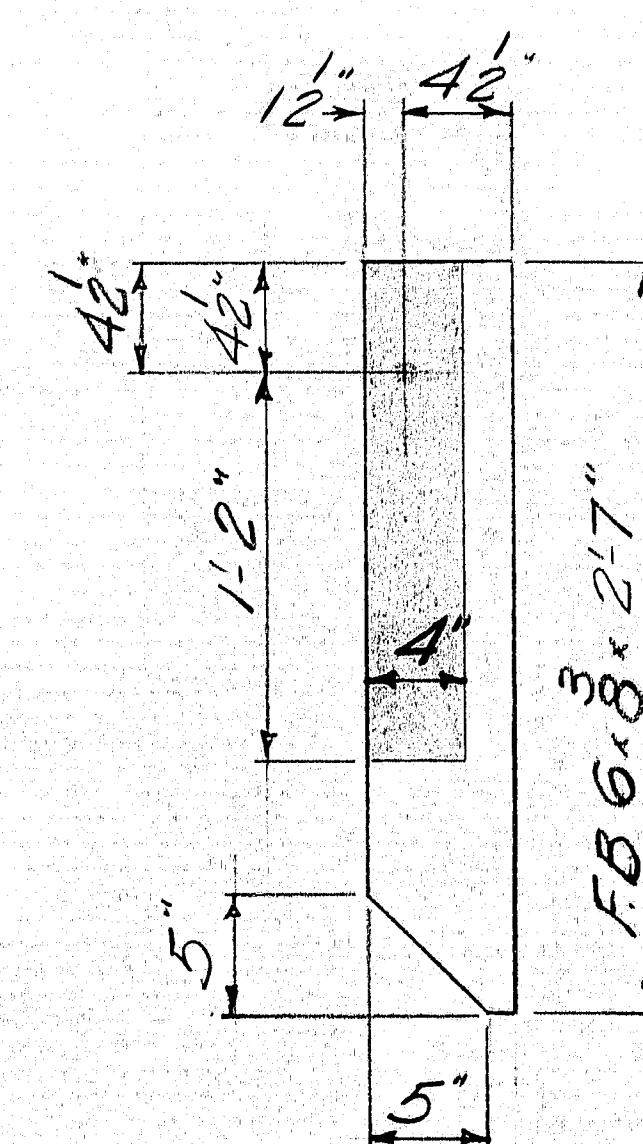
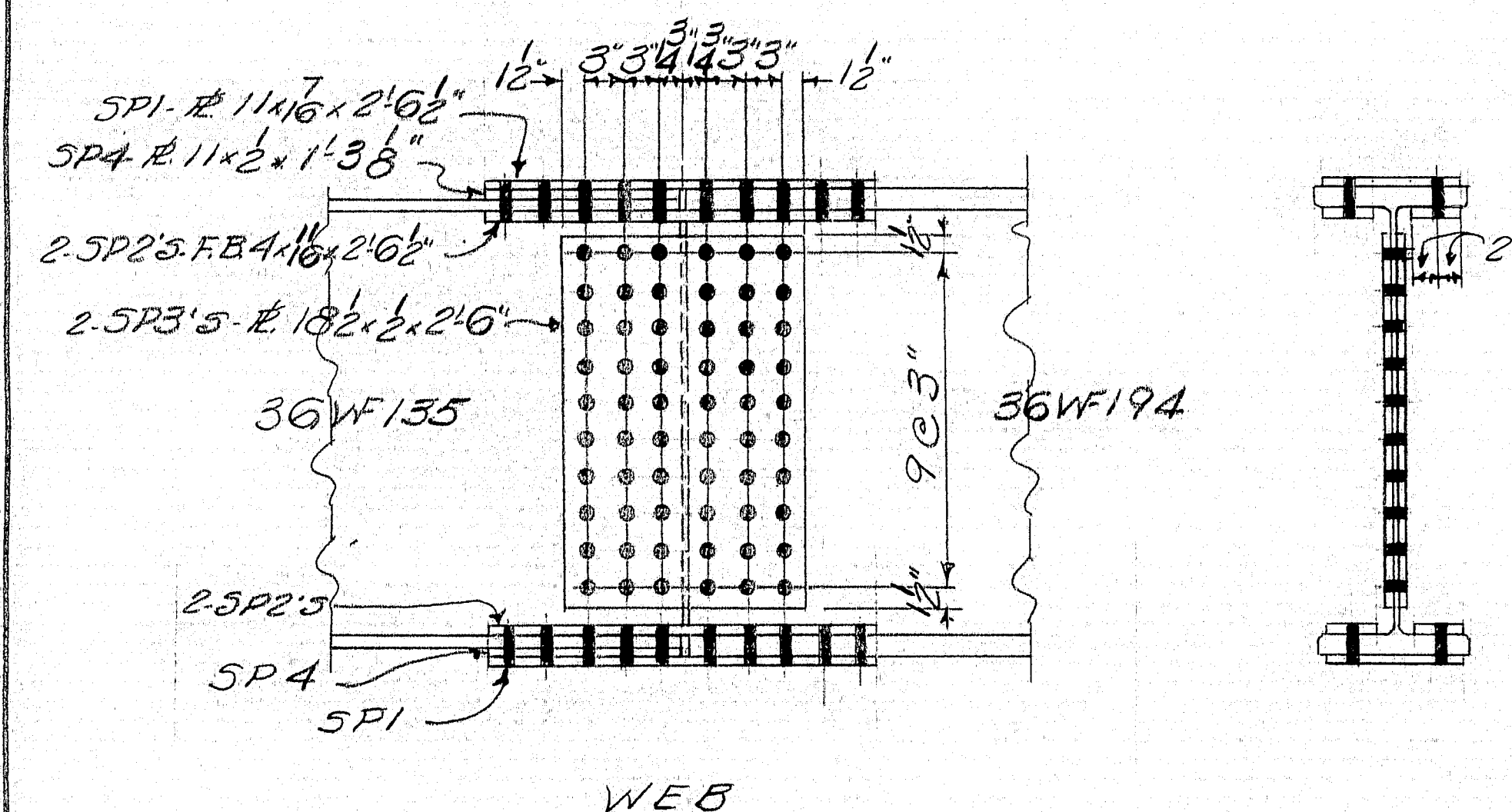
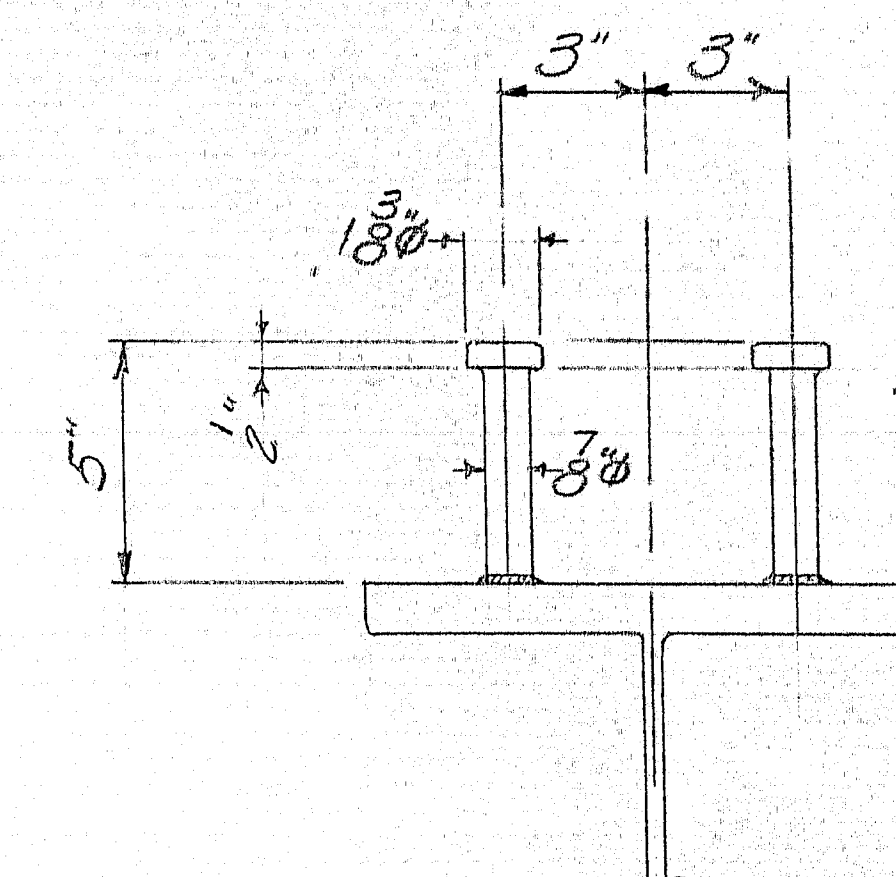
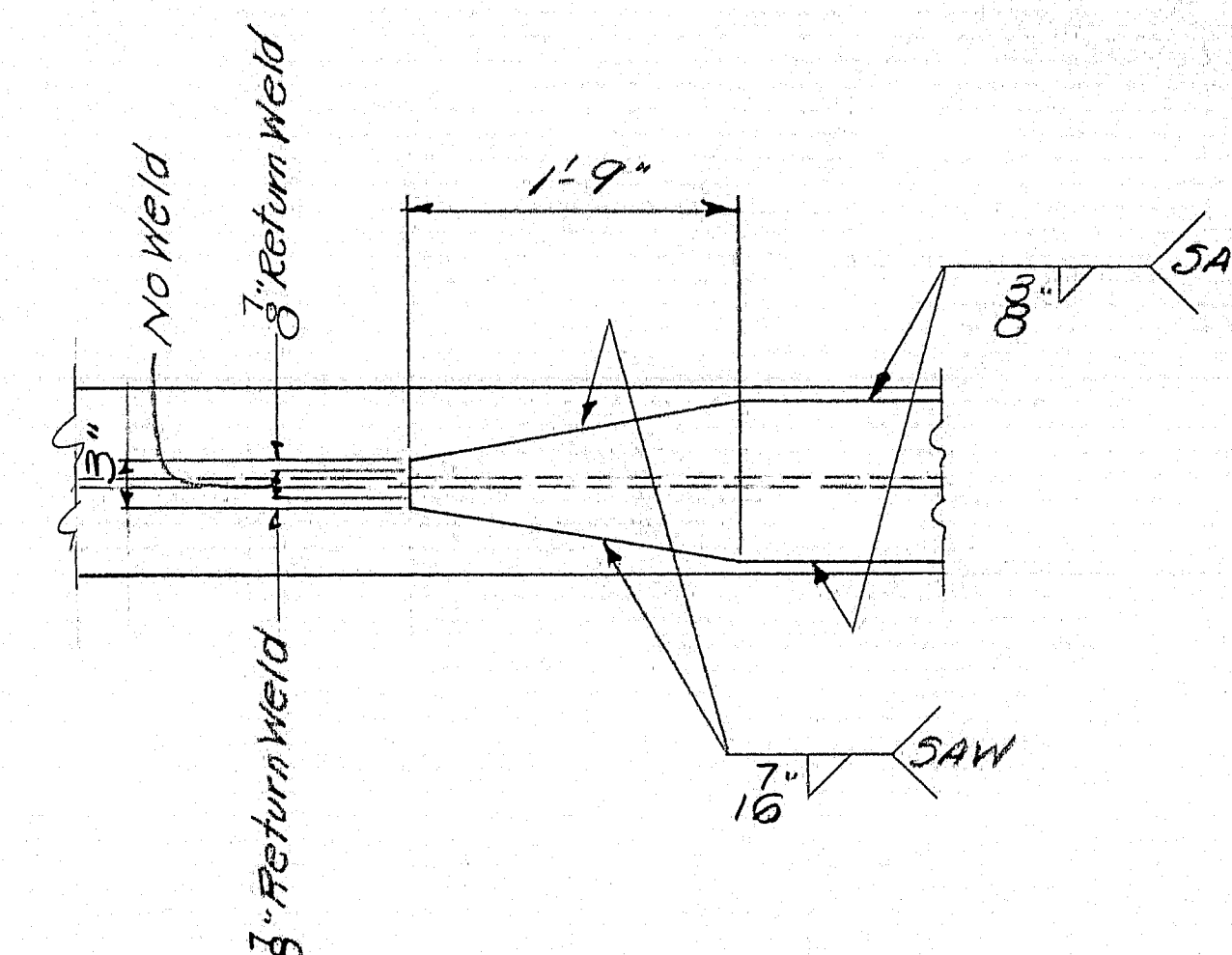
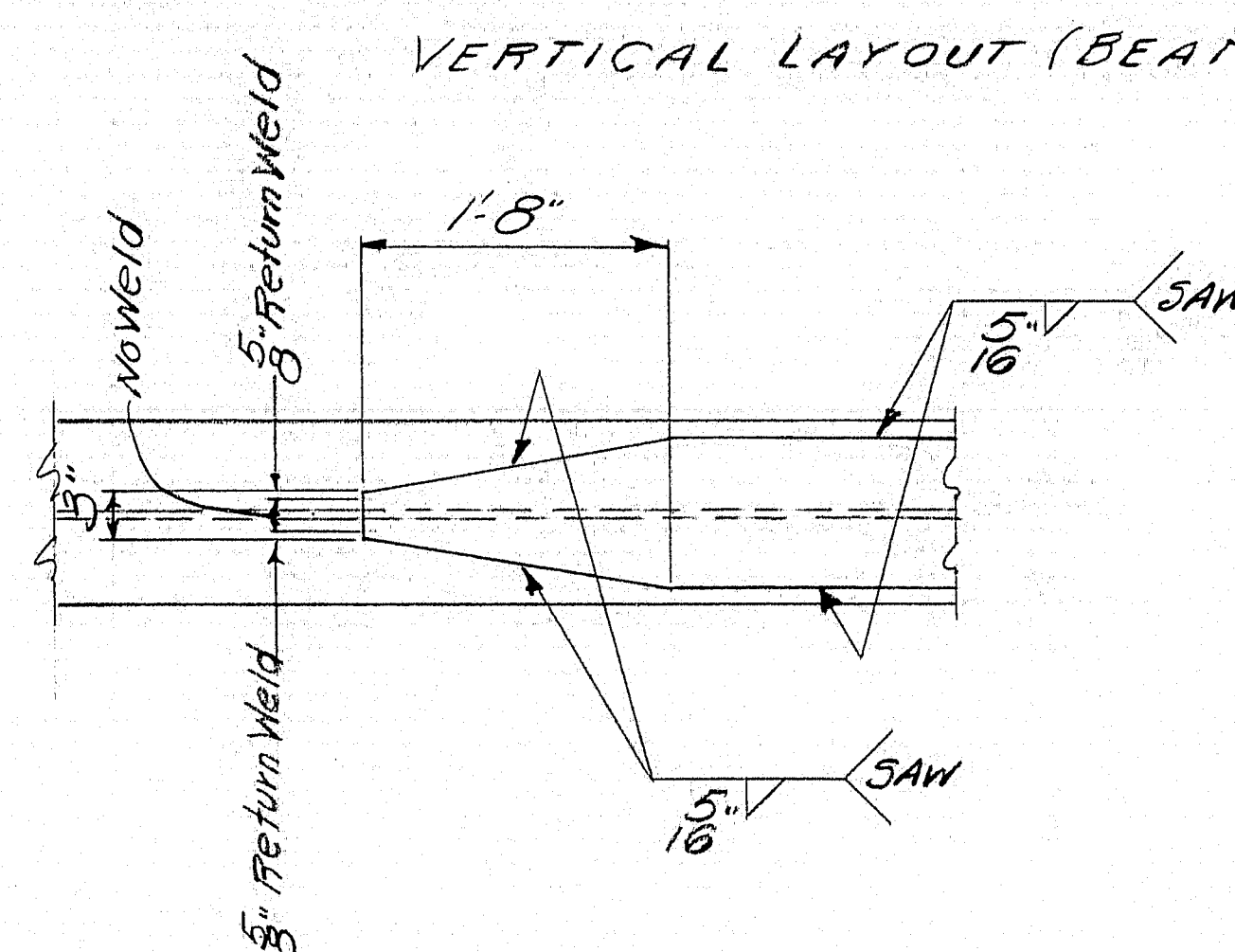
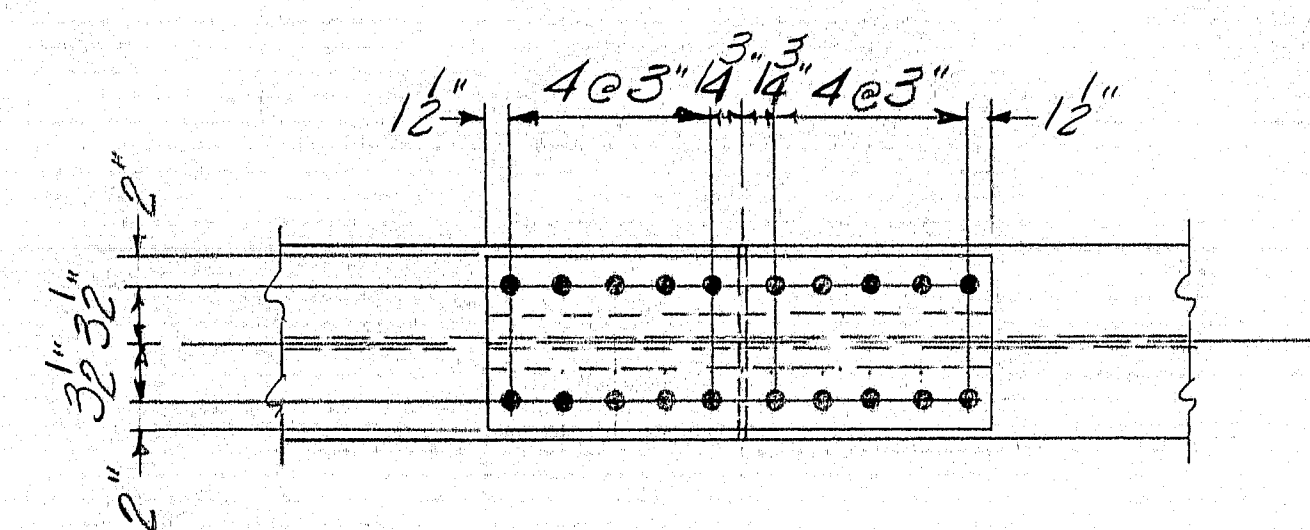
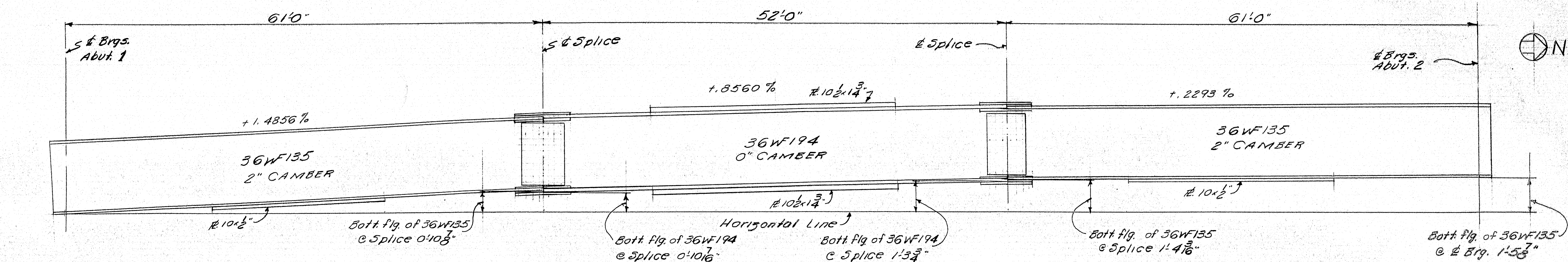
ORDER NO. DWG. NO. 65-39 E1

|          |            |
|----------|------------|
| DRAWN    | 4-6-65 PLF |
| REVISION |            |
| REVISION |            |
| REVISION |            |

94-1







SPLICE DETAIL

## SPlice Notes

Holes for splices are for H.T. Bolts. They are to be free from burrs and shall not be painted within 5" of such holes.

Holes for splices to be 15" drilled from solid white beams are assembled as shown. Match mark all splice plates.

Field bolts for flange splice  $8^{10} \times 34^3$  H.T. Bolts

Field bolts for web splice - 3"  $\phi$  x 3" H.T. Bolts @ 36W/135

3"  $\phi$  x 3 1/4" HT. Bolts @ 36 WF 194

WEB PLATE DETAILS

Holes  $\frac{15}{16}" \phi$

Omit paint at shaded areas

PROJ. NO. F-026-1 (27)

SHOP LAYDOWN & TYPICAL DETAILS

*Bancroft & Martin Inc.*  
*South Portland 7, Maine*

APR 22 1964  
CENTER STREET CONNECTION  
OVER U.S. ROUTE 1  
BATH, MAINE

CUSTOMER FEED & FEED

DESIGNER M. S. H. C.

|                 |                          |
|-----------------|--------------------------|
| ORDER NO. _____ | DWG. NO. <u>65-39-51</u> |
|-----------------|--------------------------|

ch k d

94-2

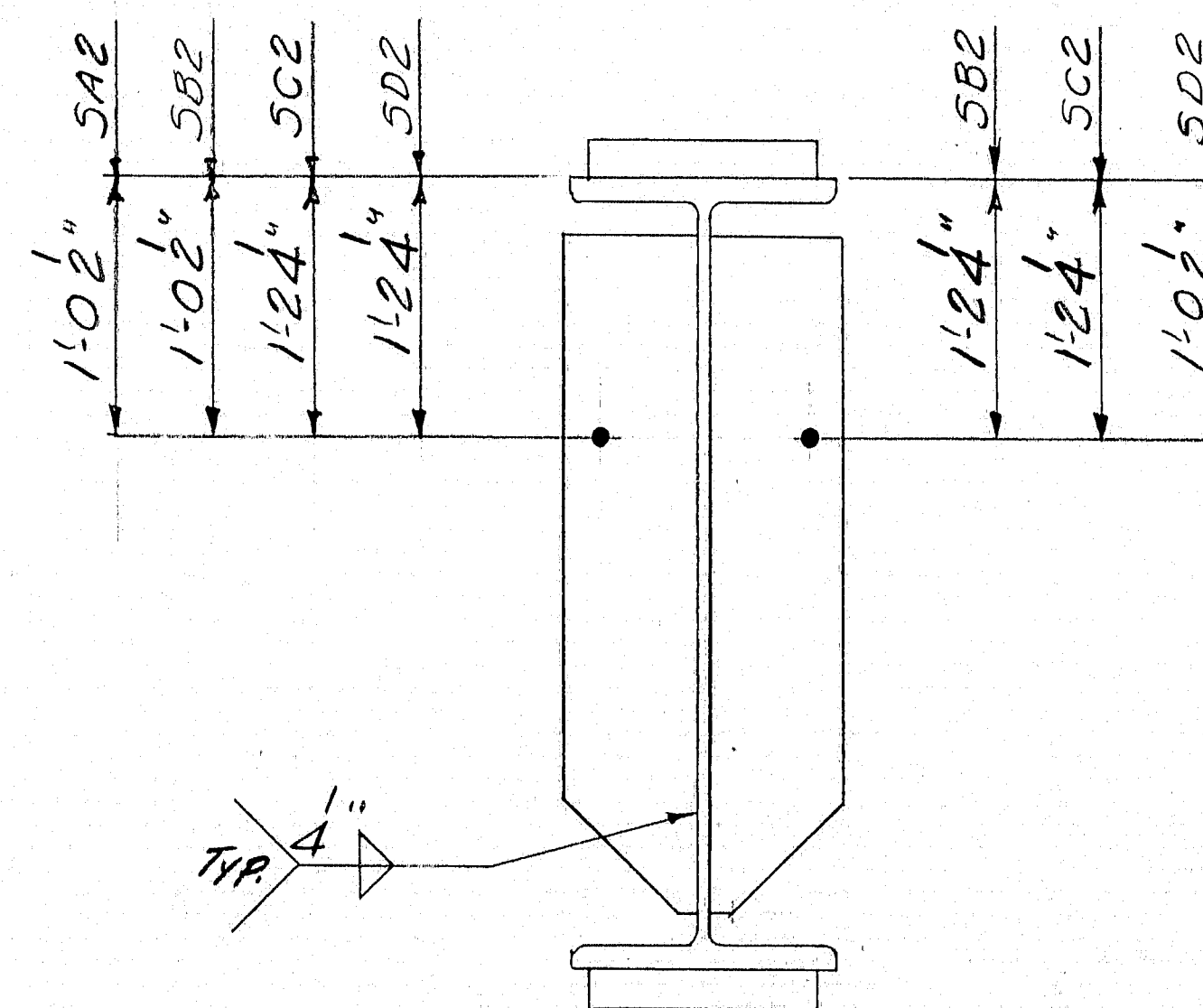
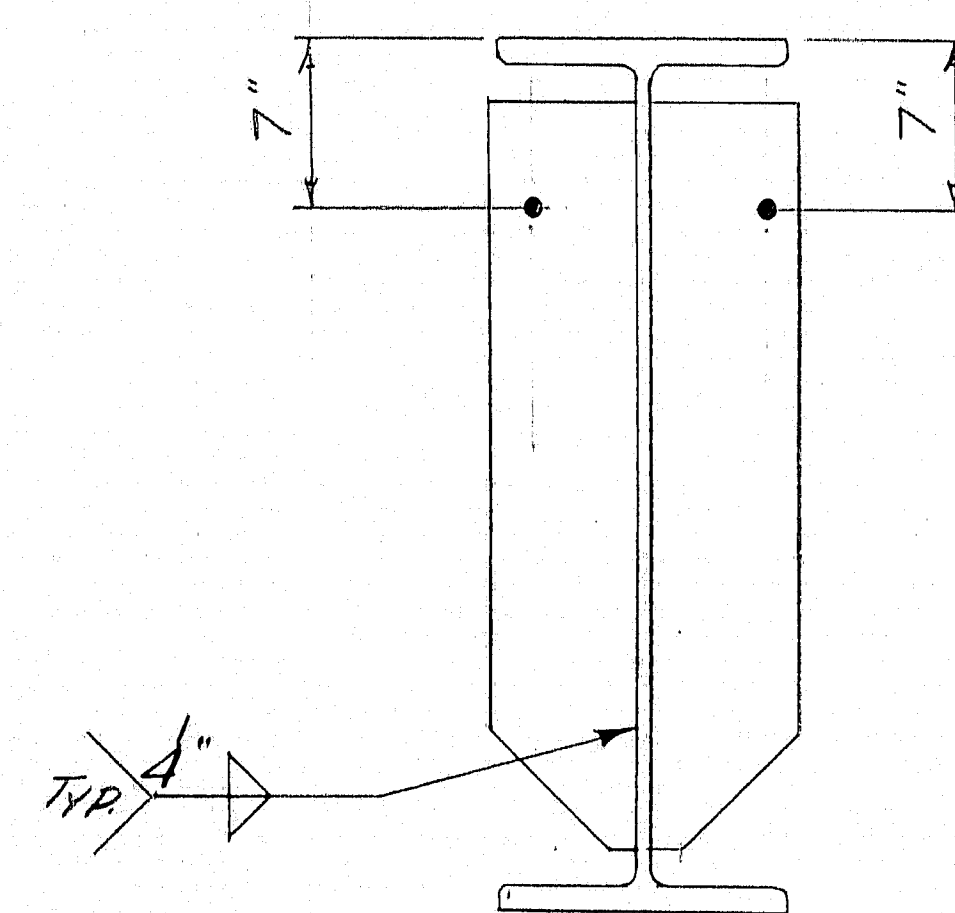
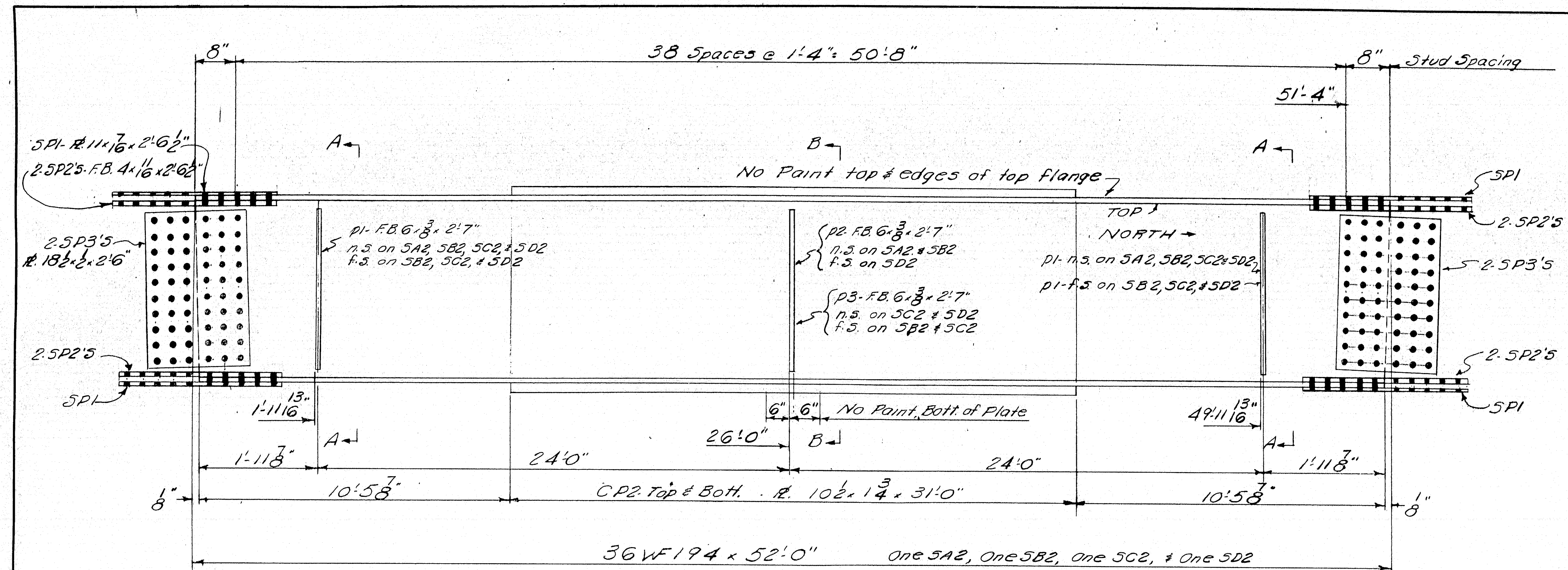












NOTES:  
 See Dwg. 65-39-51 for typical details  
 Shop adjustment may be made in stud spacing  
 at bolts in field splices (Weld studs to splice plates)

| SHIP |     | BILL OF MATERIAL |  |                     |     | DWG. NO. 65-39-54 |
|------|-----|------------------|--|---------------------|-----|-------------------|
| MARK | NO. | MARK             | SHAPE                                    | LENGTH              | WT. | REMARKS           |
| 3A2  | 1   |                  | 36WF194                                  | 52' 0"              |     |                   |
| 5B2  | 1   |                  | do                                       | 52' 0"              |     |                   |
| 5C2  | 1   |                  | do                                       | 52' 0"              |     |                   |
| 5D2  | 1   |                  | do                                       | 52' 0"              |     |                   |
|      | 8   | CP2              | $R. 10 \frac{1}{2} \times 1 \frac{3}{4}$ | 31' 0"              |     |                   |
|      | 14  | P1               | $F.B. 6 \times \frac{3}{8}$              | 2' 7"               |     |                   |
|      | 3   | P2               | do                                       | 2' 7"               |     |                   |
|      | 4   | P3               | do                                       | 2' 7"               |     |                   |
|      | 16  | 5P1              | $R. 11 \times \frac{7}{16}$              | 2' 6 $\frac{1}{2}"$ |     |                   |
|      | 32  | 5P2              | $F.B. 4 \times \frac{11}{16}$            | 2' 6 $\frac{1}{2}"$ |     |                   |
|      | 16  | 5P3              | $R. 18 \times \frac{1}{2}$               | 2' 6"               |     |                   |
|      | 312 |                  | 3" Studs                                 | 0' 5"               |     | ITEM 705-17       |

All Mat'l. A.S.T.M. A 36 Unless noted

SHOP CONNECTIONS: Welded  
 FIELD CONNECTIONS: 3" H.T. Bolts  
 HOLES:  $\frac{1}{8}"$   
 PAINT: Red Lead per M.S.H.C. Specs.

PROJ. NO. F-026-1 (27)

STRINGER DETAIL

Bancroft & Martin Inc.  
 South Portland 7, Maine

CENTER STREET CONNECTION  
 OVER U.S. ROUTE 1  
 BATH, MAINE

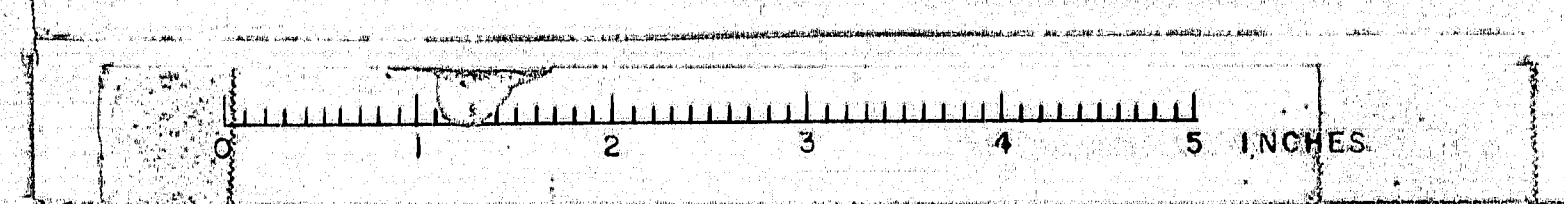
CUSTOMER: FEED & FEED  
 DESIGNER: M.S.H.C.

ORDER NO. DWG. NO. 65-39-54

|          |           |
|----------|-----------|
| DRAWN    | 4765 PLF. |
| REVISION |           |
| REVISION |           |
| REVISION |           |

chld.

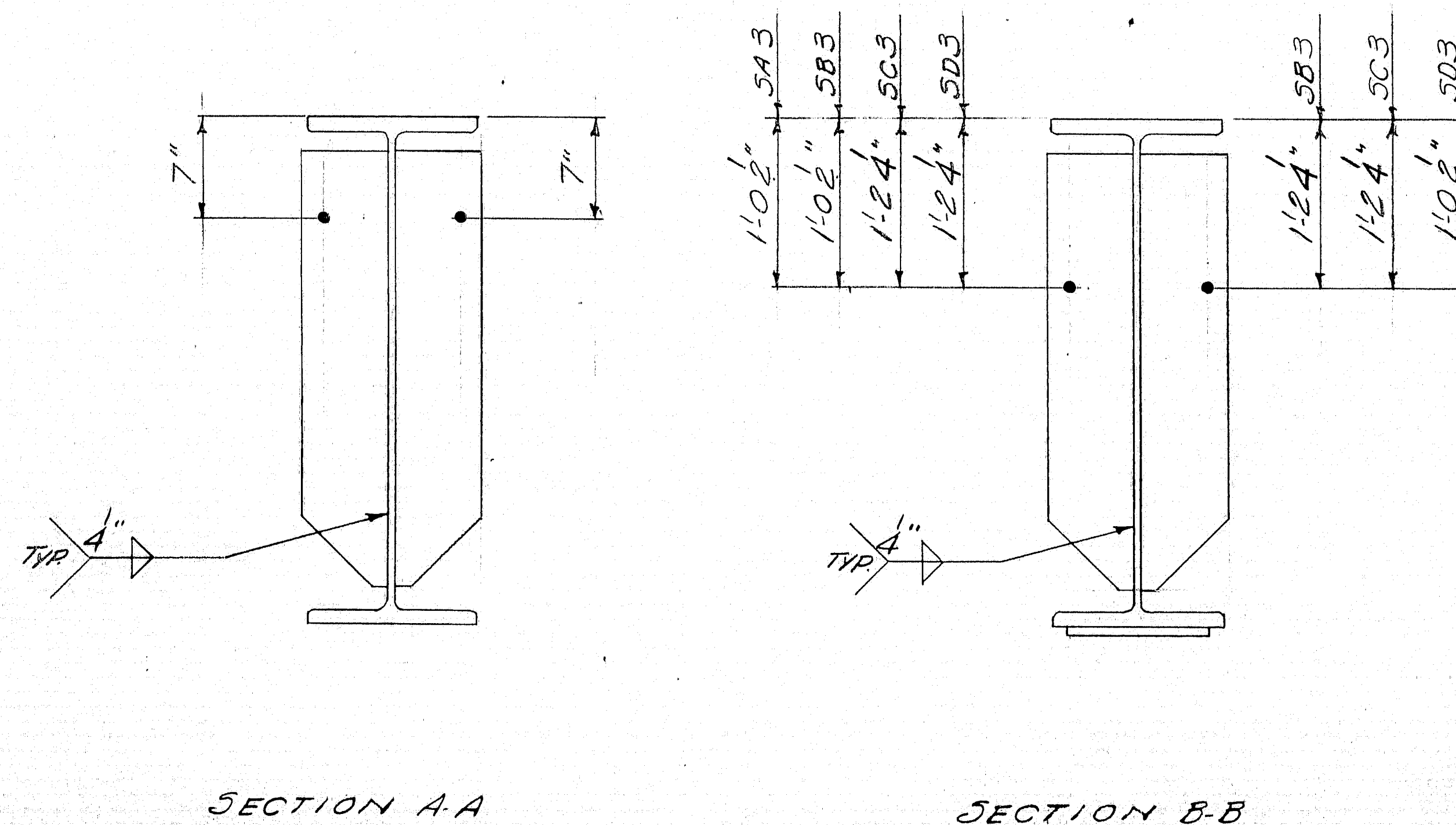
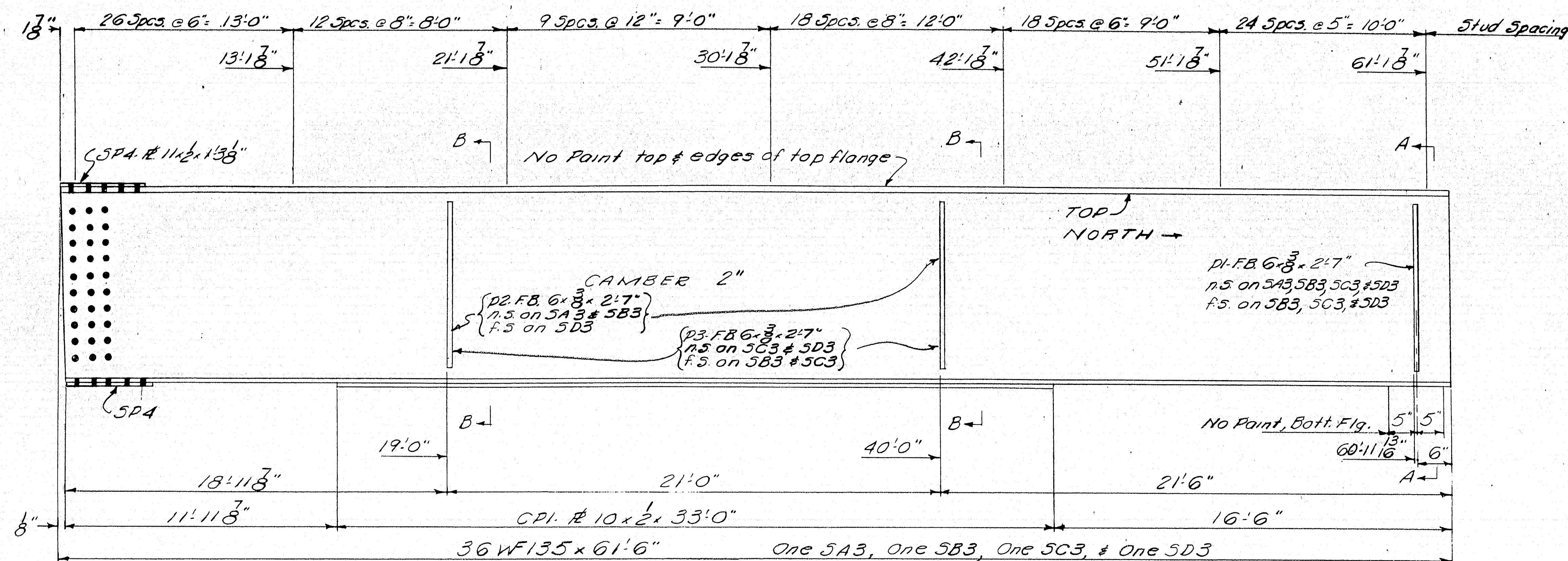
94-5











NOTES:  
See DWG. 65-39-51 for typical details  
Shop adjustment may be made in stud spacing at bolts in field splices. (Weld studs to splice plates)

| SHIP |     | BILL OF MATERIAL |              |           |     | DWG. NO. 65-39-56 |
|------|-----|------------------|--------------|-----------|-----|-------------------|
| MARK | NO. | MARK             | SHAPE        | LENGTH    | WT. | REMARKS           |
| SA3  | 1   |                  | 36 WF 135    | 61' 6"    |     | CAMBER 2"         |
| SB3  | 1   |                  | do           | 61' 6"    |     | CAMBER 2"         |
| SC3  | 1   |                  | do           | 61' 6"    |     | CAMBER 2"         |
| SD3  | 1   |                  | do           | 61' 6"    |     | CAMBER 2"         |
|      | 4   | CPI              | # 10 x 2     | 33' 0"    |     |                   |
|      | 7   | P1               | FB 6 x 3/8   | 2' 7"     |     |                   |
|      | 6   | P2               | do           | 2' 7"     |     |                   |
|      | 8   | P3               | do           | 2' 7"     |     |                   |
|      | 8   | SP4              | # 11 x 2     | 1' 3 3/8" |     |                   |
|      | 864 |                  | 3" x 5 studs | 0' 5"     |     | ITEM 705-17       |

All Mat'l. A.S.T.M. A36 Unless noted

SHOP CONNECTIONS: Welded  
FIELD CONNECTIONS: 3" x H.T. Bolts  
HOLES: 1/8" dia  
PAINT: Red Lead per M.S.H.C. Specs.

PROJ. No. F-026-1 (27)

STRINGER DETAIL

Bancroft & Martin Inc.  
South Portland 7, Maine

CENTER STREET CONNECTION  
OVER U.S. ROUTE 1  
BATH, MAINE

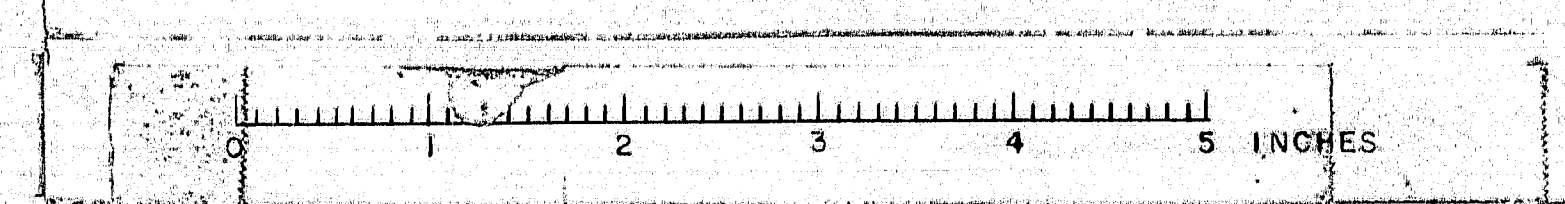
CUSTOMER: REED & REED  
DESIGNER: M.S.H.C.

ORDER NO. DWG. NO. 65-39-56

|          |             |
|----------|-------------|
| DRAWN    | 4865 P.L.F. |
| REVISION |             |
| REVISION |             |
| REVISION |             |

chkd

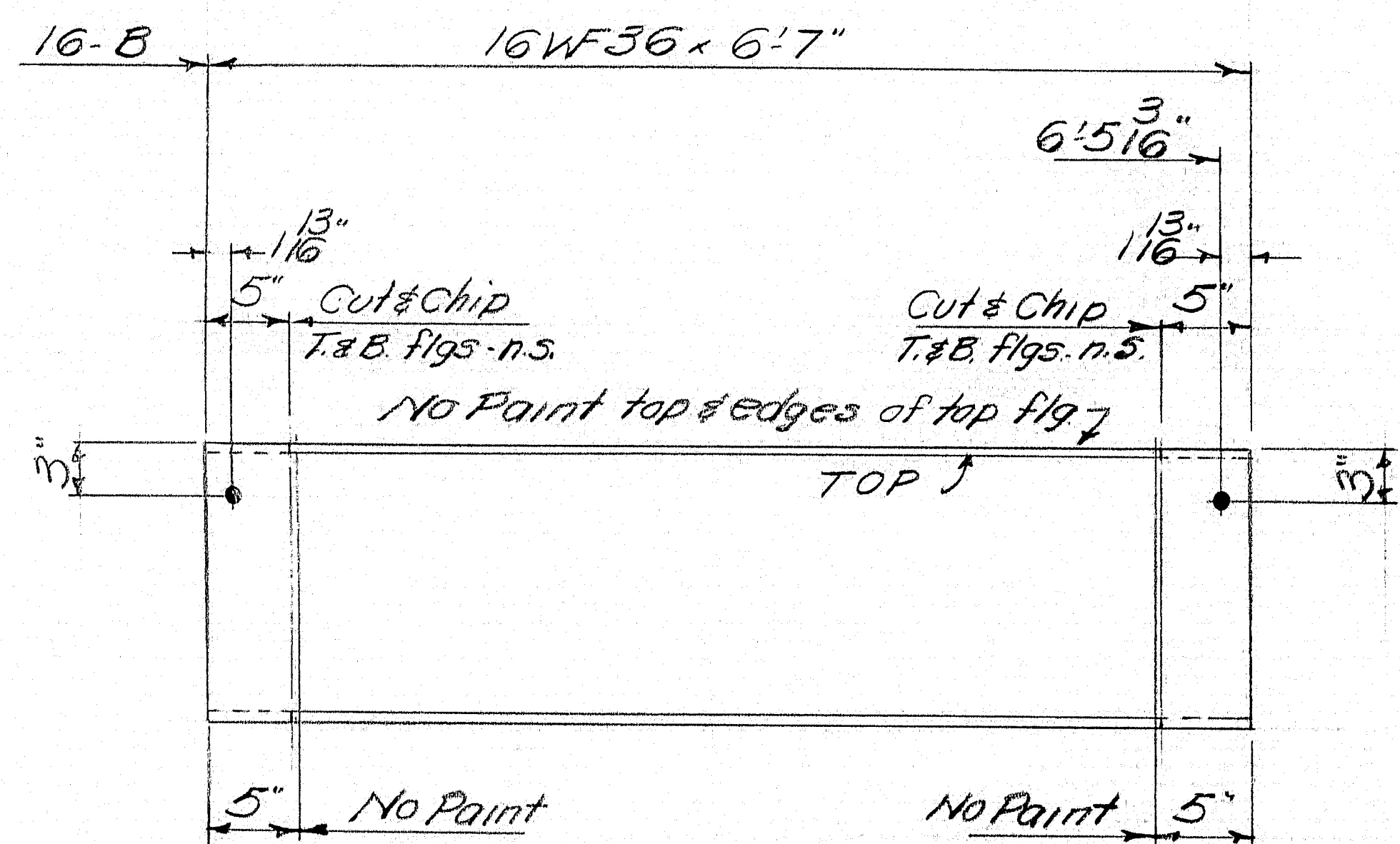
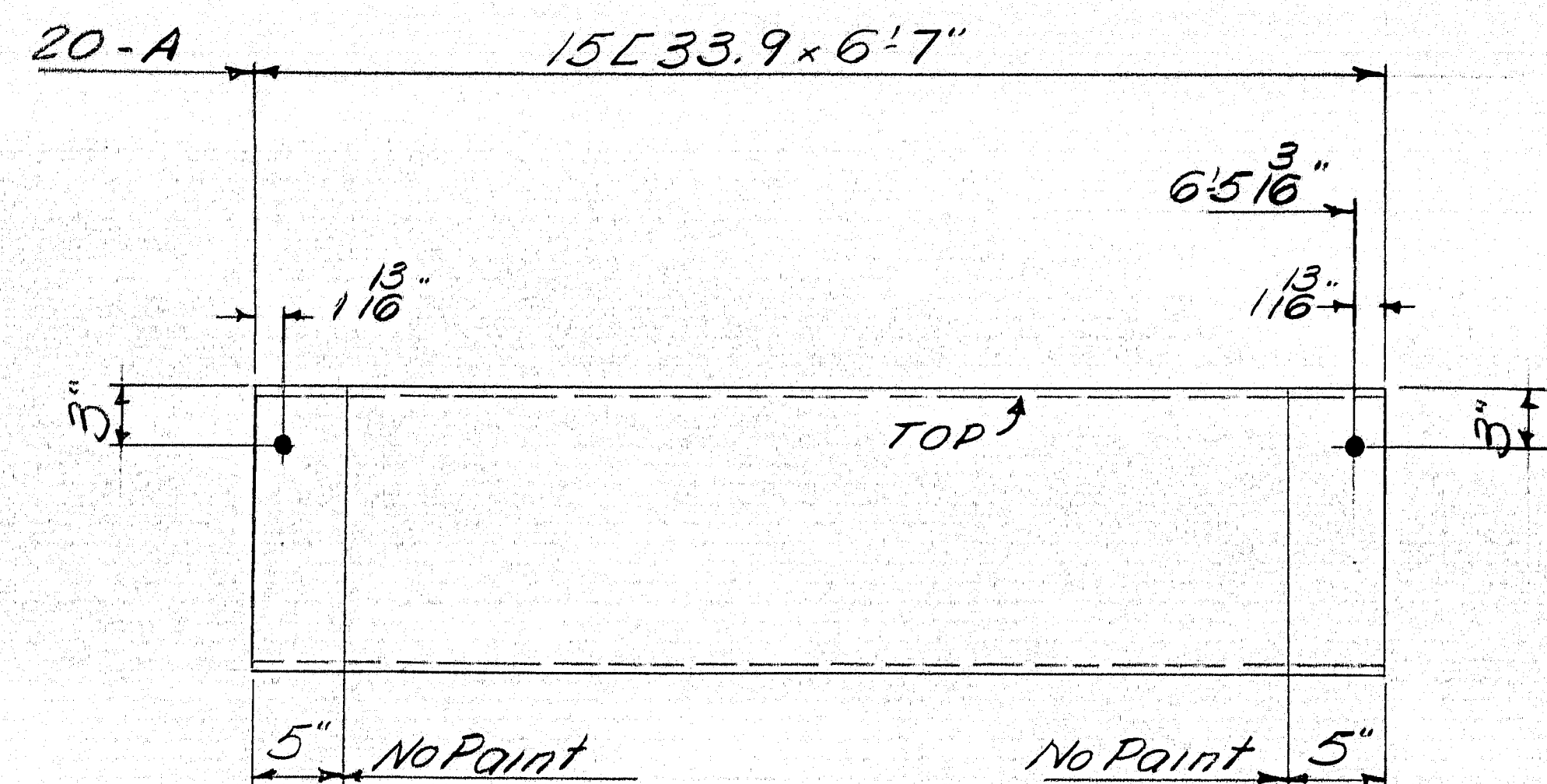
94-7











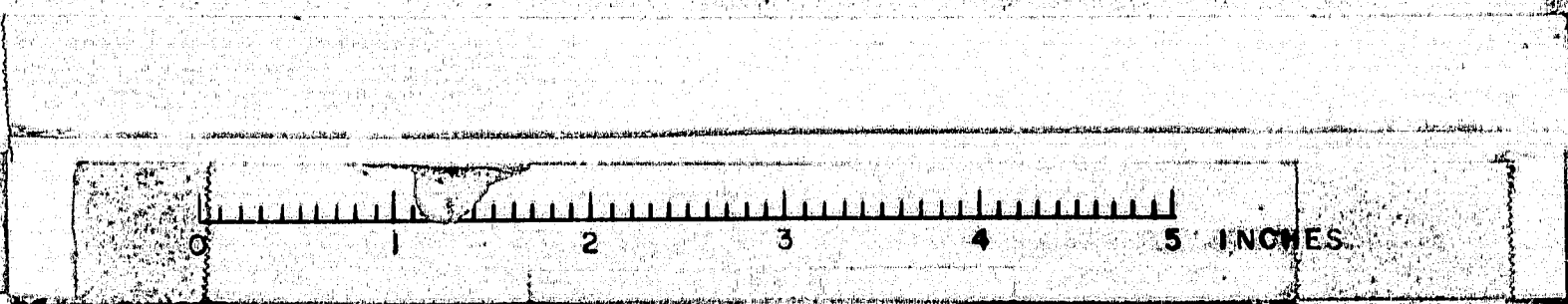
| SHIP  |     | BILL OF MATERIAL |              |         |     | DWG. NO. 65-39-58 |
|-------|-----|------------------|--------------|---------|-----|-------------------|
| MARK  | NO. | MARK             | SHAPE        | LENGTH  | WT. | REMARKS           |
| A     | 20  |                  | 15L33.9      | 6       | 7   | A36               |
| B     | 16  |                  | 16WF36       | 6       | 7   | A36               |
| Field | 80  |                  | 3/4" M. Bolt | 0       | 12  | Erection Bolts    |
|       |     |                  | ITEM         | 702-103 |     |                   |

SHOP CONNECTIONS: —  
 FIELD CONNECTIONS: Welded  
 HOLES: 1/8" Ø  
 PAINT: Red Lead per M.S.H.C. Specs  
 PROJ. No. F-026-1 (27)

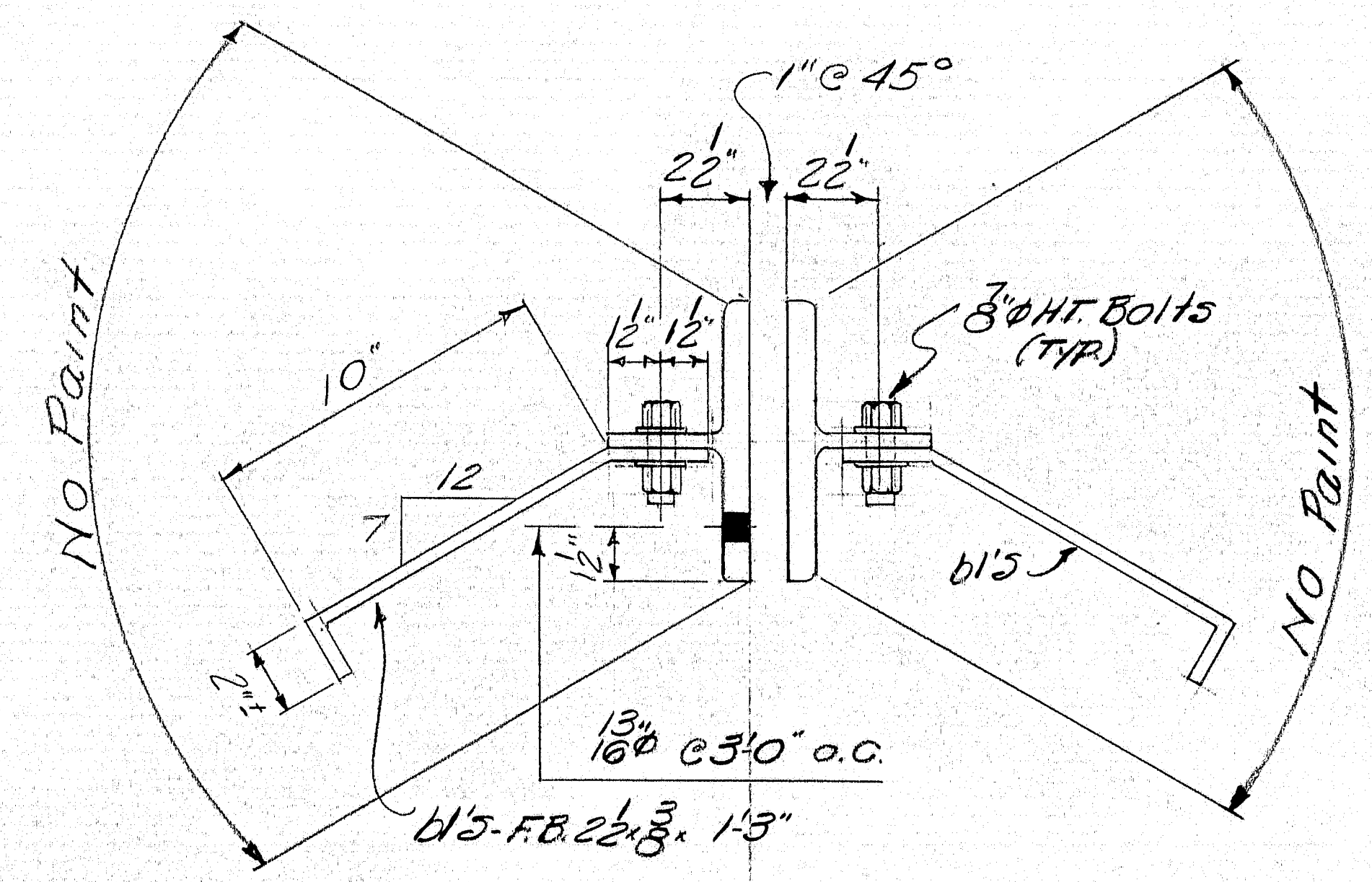
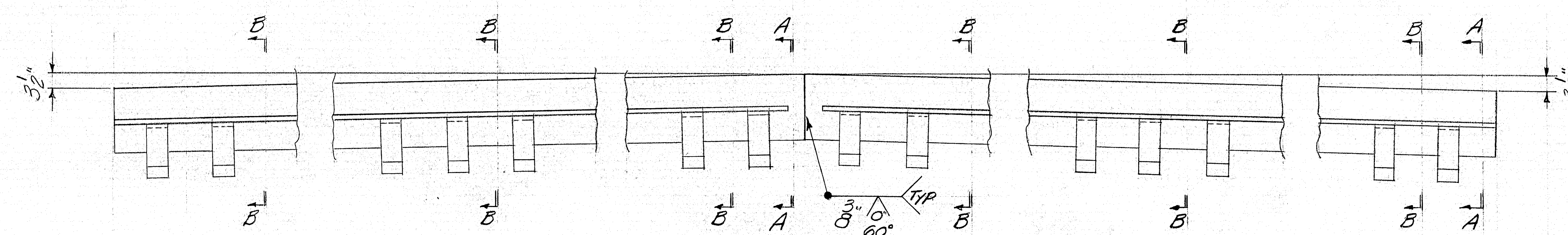
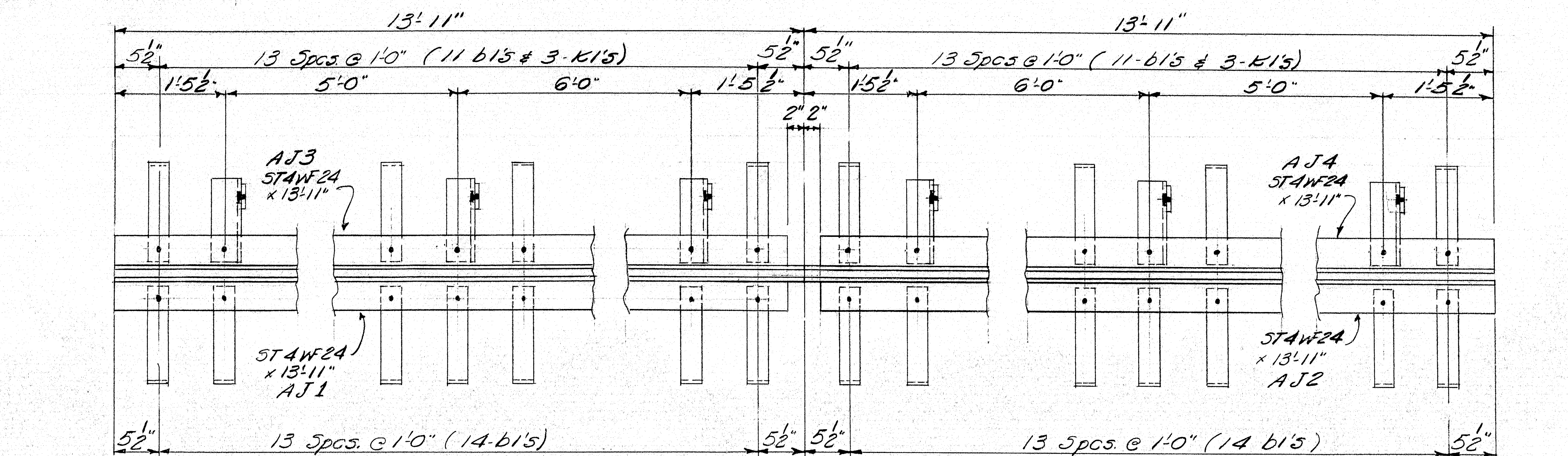
DIAPHRAGMS  
 Bancroft & Martin Inc.  
 South Portland 7, Maine  
 CENTER STREET CONNECTION  
 OVER U.S. ROUTE 1  
 BATH, MAINE  
 CUSTOMER: FEED & FEED  
 DESIGNER: M.S.H.C.

|          |             |           |                   |
|----------|-------------|-----------|-------------------|
| DRAWN    | 4965 P.L.F. | ORDER NO. | DWG. NO. 65-39-58 |
| REVISION |             |           |                   |
| REVISION |             |           |                   |
| REVISION |             |           |                   |

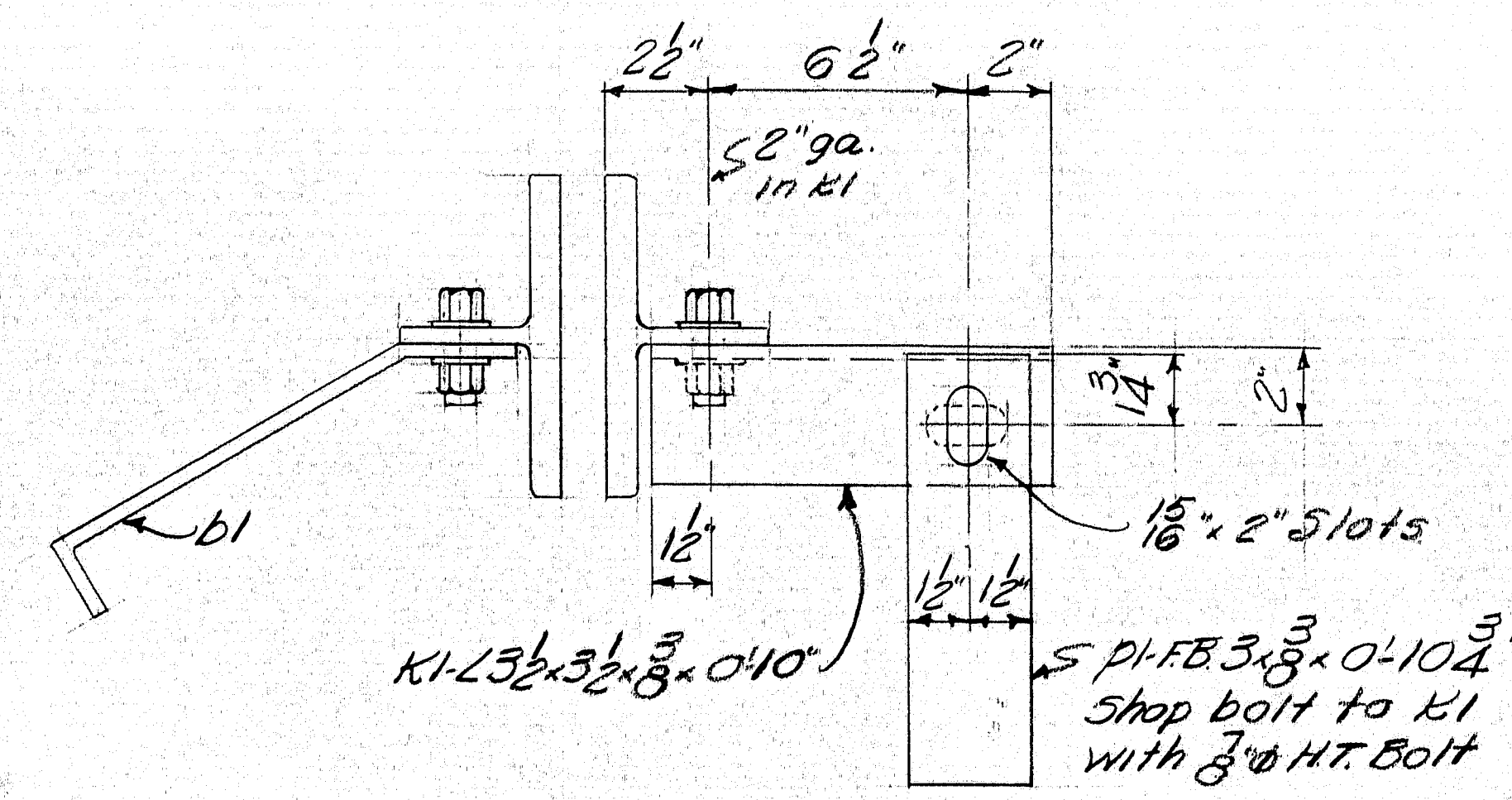
94-9







SECTION A-A  
TYPICAL except as noted



ARMORED JOINT  
2 REQ'D

| SHIP             |     | BILL OF MATERIAL |            |        |      | DWG. NO. 65-39-59 |
|------------------|-----|------------------|------------|--------|------|-------------------|
| MARK             | NO. | MARK             | SHAPE      | LENGTH | WT.  | REMARKS           |
| AJ1              | 2   |                  | ST4WF24    | 13     | 11   |                   |
| AJ2              | 2   |                  | do         | 13     | 11   |                   |
| AJ3              | 2   |                  | do         | 13     | 11   |                   |
| AJ4              | 2   |                  | do         | 13     | 11   |                   |
|                  | 12  | K1               | 132.32.3   | 0      | 10   |                   |
|                  | 12  | P1               | FB.3.8     | 0      | 10.4 |                   |
|                  | 100 | b1               | FB.22.8    | 1      | 3    |                   |
|                  | 124 | Shop             | 3" HT Bolt | 0      | 24   | ASTM A325         |
|                  | 248 | Shop             | 3" Washer  | 0      | 24   |                   |
| ITEM NO. 702-103 |     |                  |            |        |      |                   |

All Mat'l. A.S.T.M. A36 except as noted

SHOP CONNECTIONS: 3" HT Bolts  
FIELD CONNECTIONS: Welded  
HOLES: 1/8" except as noted  
PAINT: Red Lead per M.S.H.C. Specs

PROJ. NO. F-028-1 (27)

ARMORED JOINTS

Bancroft & Martin Inc.  
South Portland 7, Maine

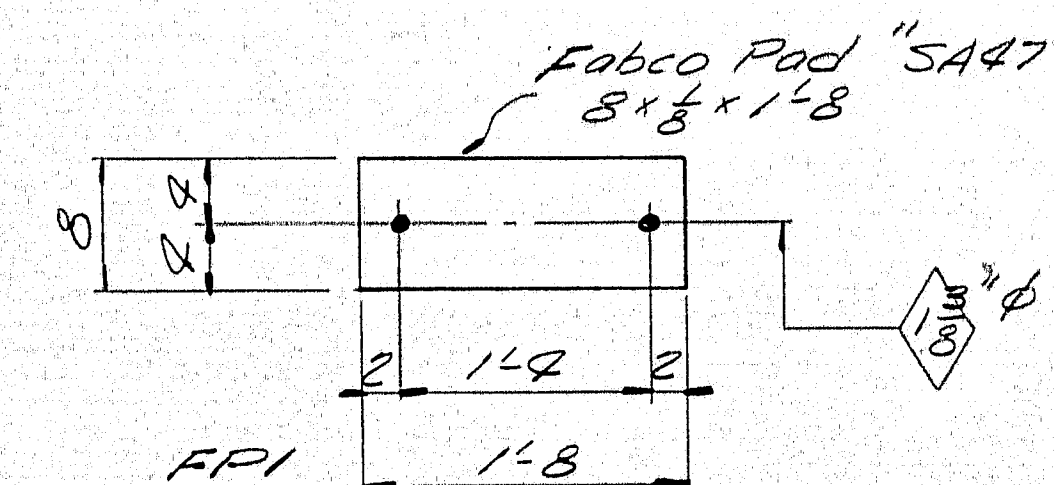
CENTER STREET CONNECTION  
OVER U.S. ROUTE 1  
BATH, MAINE

CUSTOMER: REED & REED  
DESIGNER: M.S.H.C.

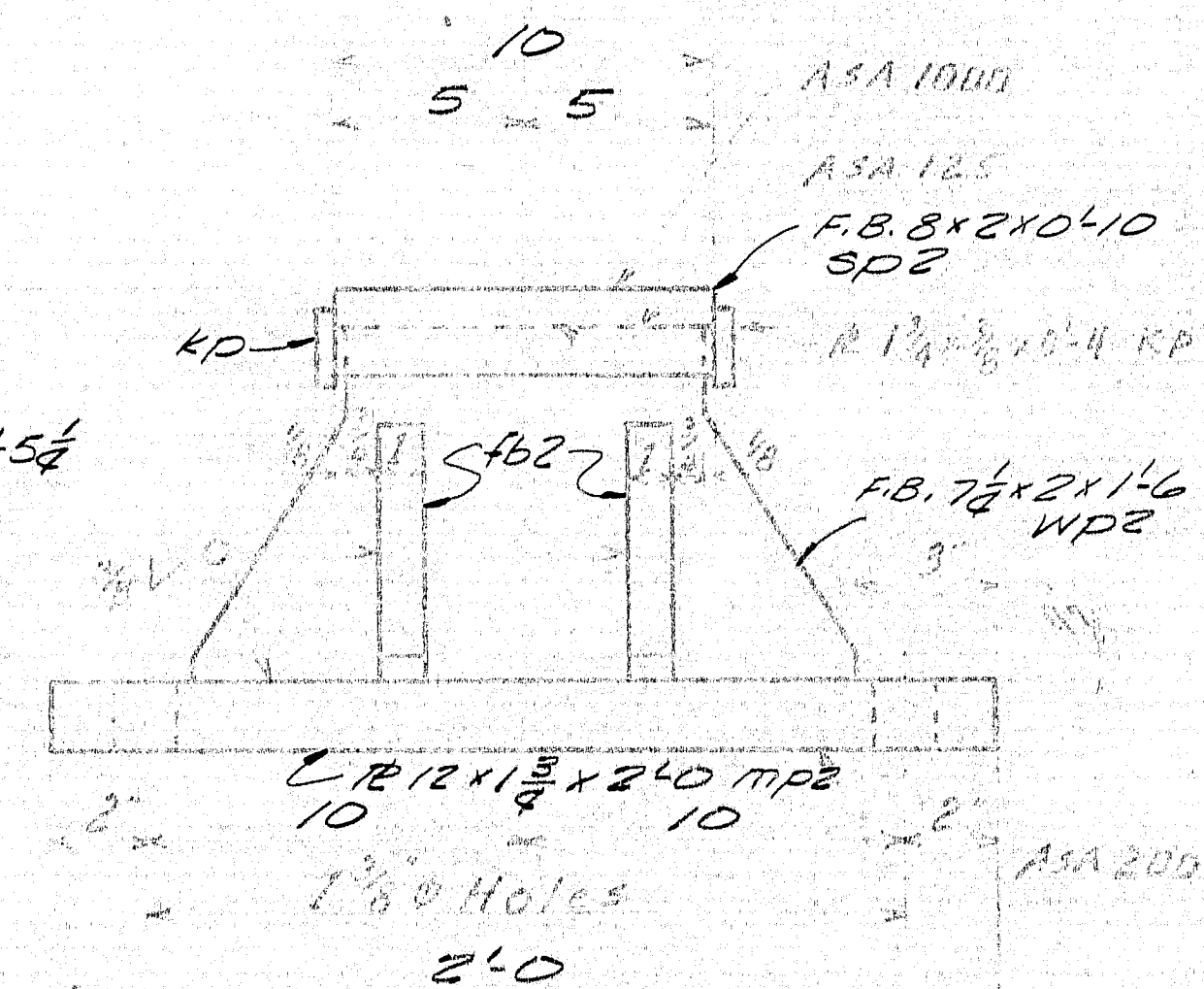
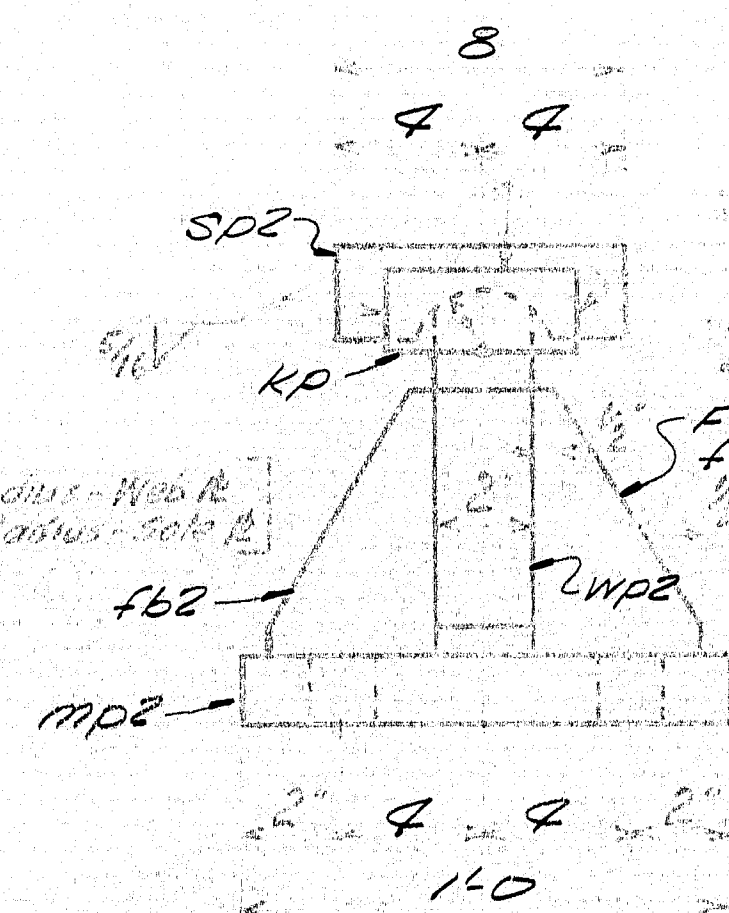
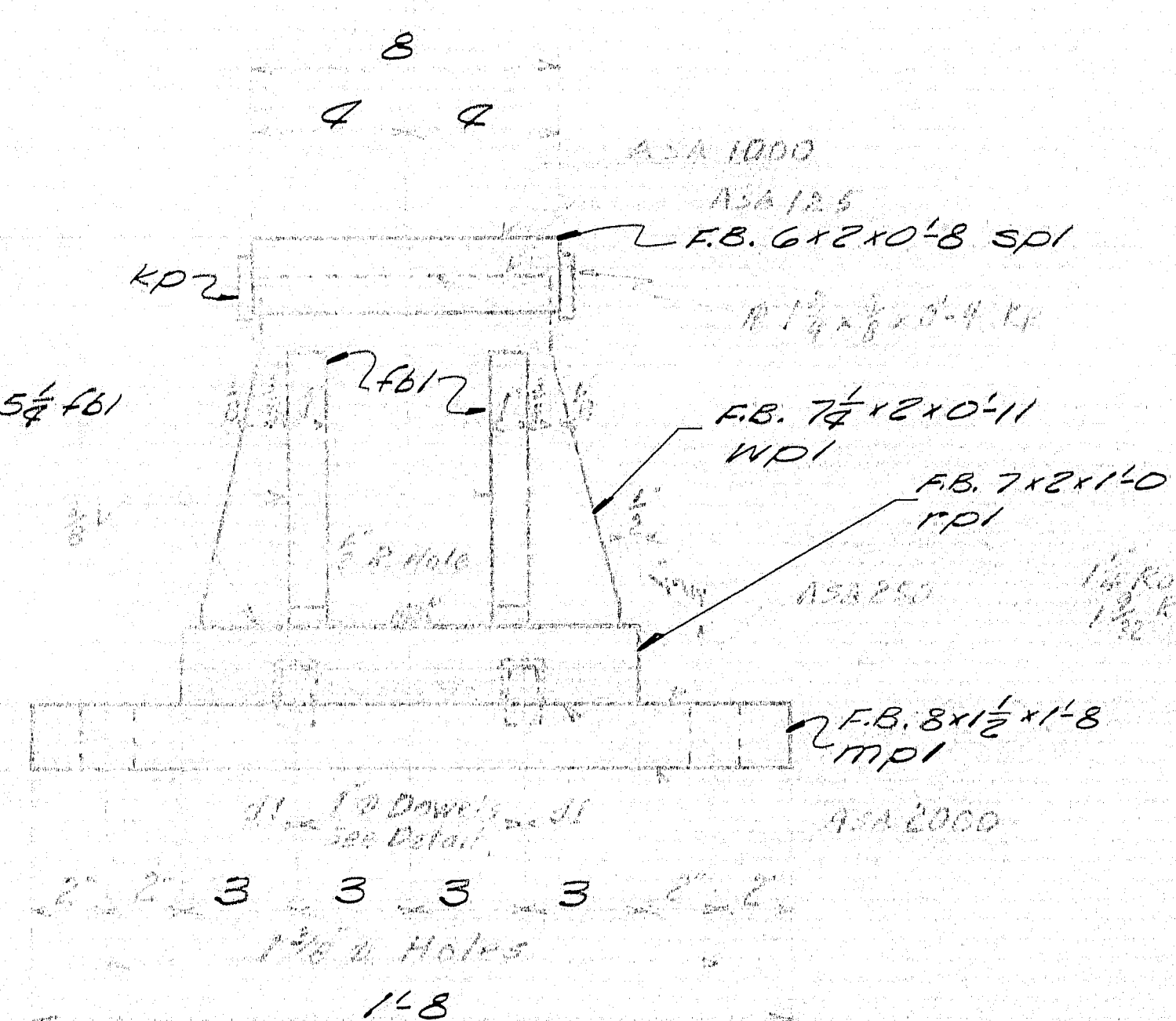
ORDER NO. \_\_\_\_\_ DWG. NO. 65-39-59

|          |              |
|----------|--------------|
| DRAWN    | 4965 P.L.F.  |
| REVISION | 43065 P.L.F. |
| REVISION |              |
| REVISION |              |

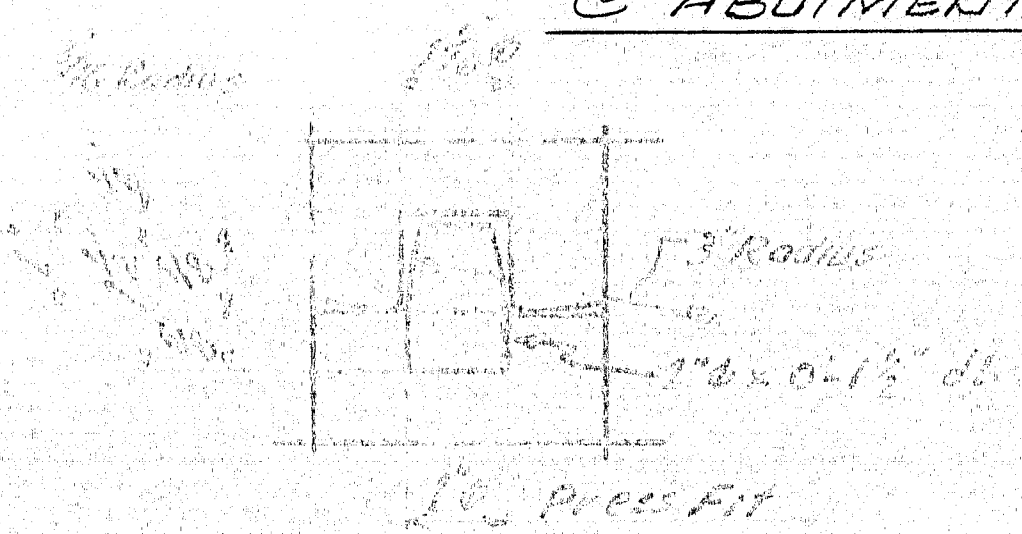




10 REQ'D. @ EPC-2



## @ ABUTMENTS

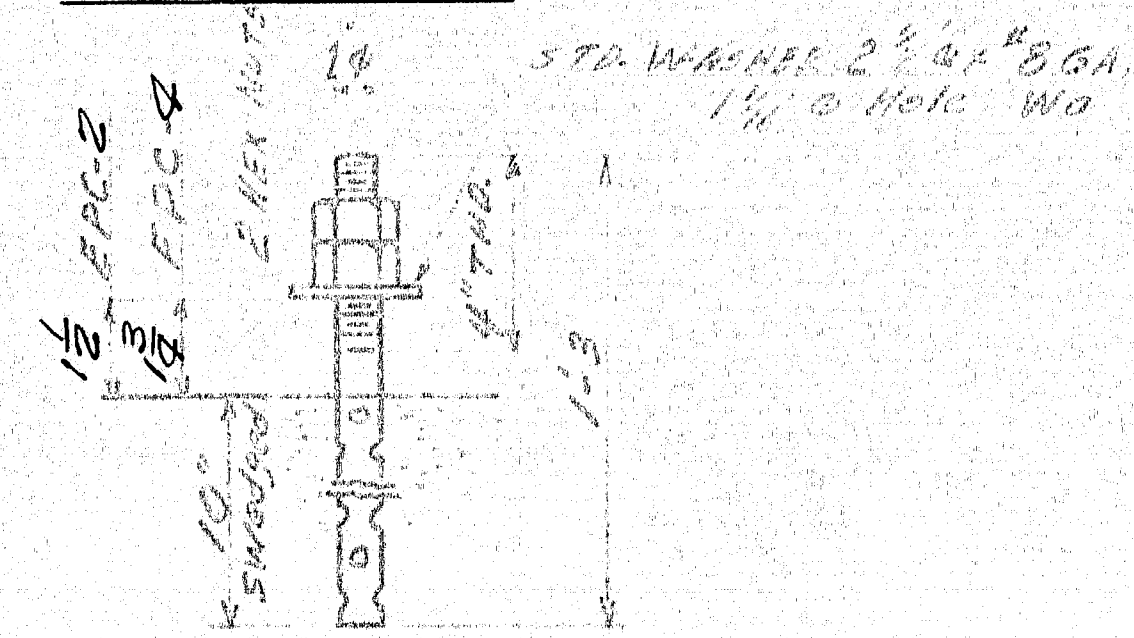


20711 DETAIL

## PAINT NOTE

NO PAINT ON TOP OF SOLE PLATES "3P" AND  
1" DOWN FROM TOP ON SIDES; COAT WITH BOILED  
LINSEED OIL.  
NO PAINT ON SURFACE WITH ASA 125 FINISH;  
COAT WITH MIXTURE OF WHITE LEAD AND TALLOW.

FIXED PEDESTAL FPC-4 5 REED  
@ PIER



ANCHOR BOLTS 10"x1-2 AB1.  
2 REQ FOR EPC-2 4 REQ'D FOR EPC-4  
NO PAINT - OIL TDS.  
40-REQD.

| CMP  |     | BILL OF MATERIAL |                           |         | DWG. NO. 25-32-S/D |                                   |
|--|-----|------------------|---------------------------|---------|--------------------|-----------------------------------|
| MARK   | NO. | MARK             | SHAPE                     | LENGTH  | WT.                | REMARKS                           |
| EXP2   | 10  |                  | EXPANSION PEDESTAL ASS'Y. |         |                    |                                   |
|  | 10  | MDI              | FB. 8 x 1 1/2             | 1 8     |                    |                                   |
|  | 10  | MDI              | FB. 7 x 2                 | 1 0     |                    |                                   |
|  | 10  | MDI              | FB. 7 1/2 x 2             | 0 11    |                    |                                   |
|  | 10  | SDI              | FB. 6 x 2                 | 0 8     |                    |                                   |
|  | 40  | FB1              | FB. 2 x 1                 | 0 5 1/2 |                    |                                   |
|  | 20  | KD               | FB. 1 1/2 x 3/8           | 0 2     |                    |                                   |
|  | 20  | DI               | 1/4 bar                   | 0 1 1/2 |                    |                                   |
| EXP4   | 5   |                  | FIXED PEDESTAL ASSY.      |         |                    |                                   |
|  | 5   | MP2              | R 1/2 x 1 1/2             | 2 0     |                    |                                   |
|  | 5   | WIP2             | FB. 7 1/2 x 2             | 1 6     |                    |                                   |
|  | 5   | SP2              | FB. 8 x 2                 | 0 10    |                    |                                   |
|  | 20  | FB2              | FB. 4 1/2 x 1             | 0 5 1/2 |                    |                                   |
|  | 10  | KD               | FB. 1 1/2 x 3/8           | 0 2     |                    |                                   |
| AB1  | 80  |                  | 1/8 bar                   | 1 3     |                    | swedge                            |
|  | 80  |                  | 1/8 Hex                   |         |                    |                                   |
| WA   | 80  |                  | 1" 5/8 washer             |         |                    | 24 G.D. x 1 1/2 in.<br>1/2" 40/18 |
| FD1  | 10  |                  | rod 8 x 3/8               | 1 8     |                    | Feeco Rod Req. Lb 5649            |
| FP2  | 5   |                  | rod 12 x 3/8              | 2 0     |                    | 00                                |
| <p><u>NOTE:</u></p> <p>Allowance to be made for machining when cutting above plates.</p> <p><u>ITEM 702-103</u></p> <p><u>PROJECT NUMBER F-026-1(27)</u></p> <p>All welds to be made with E70 Electrodes</p> |     |                  |                           |         |                    |                                   |

BEARING MATERIAL TO BE ASTM A36  
ANCHOR BOLTS TO BE A7, A36 OR A307  
SHOP CONNECTIONS: WELDED  
FIELD CONNECTIONS:  
HOLES: AS NOTED  
PAINT: RED LEAD PER MARINE ENG. SPEC.  
SOLE PLATES "3A" FIELD WELDED TO STRINGERS

## BEARING DETAILS

*Knickerbocker & Martin Inc.*  
*South Portland & Maine*

CENTER STREET CONNECTION  
OVER U.S. ROUTE 1  
BATH, MAINE.

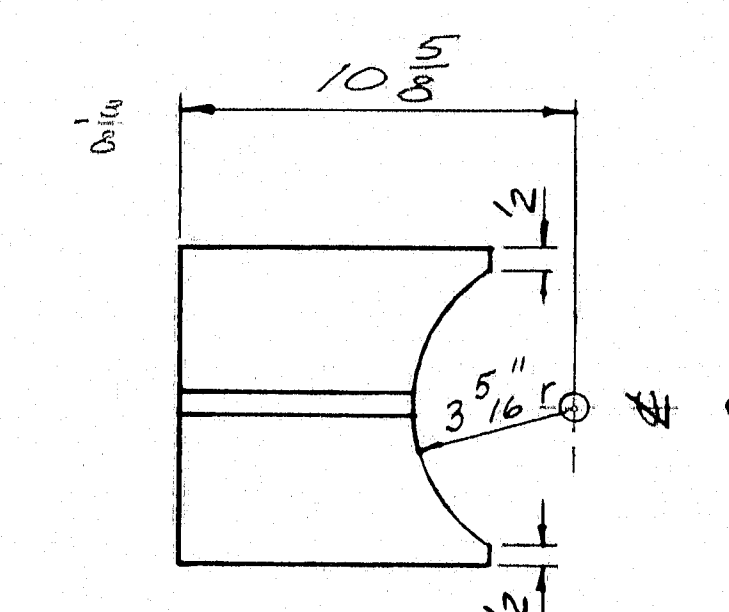
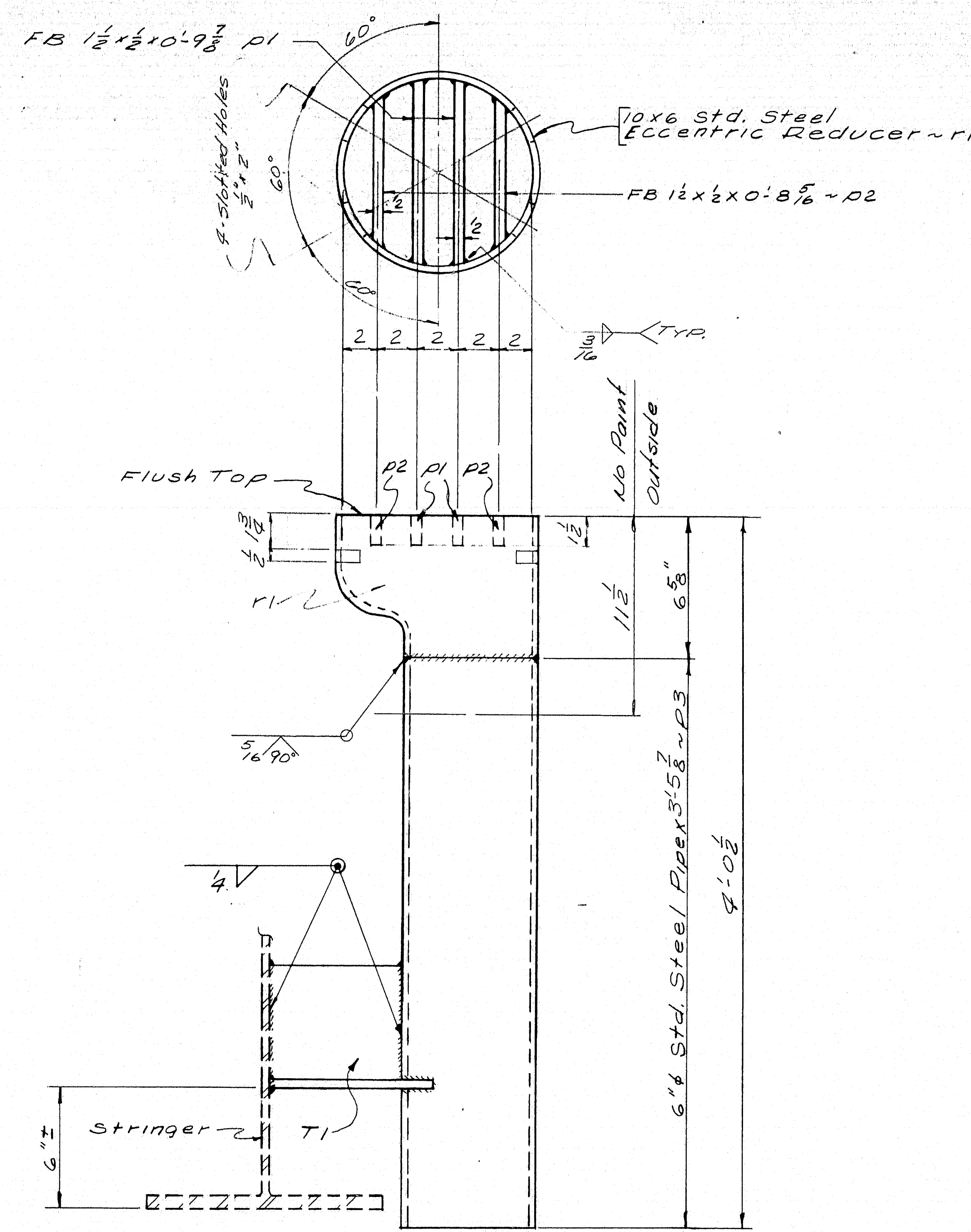
CUSTOMER REED & REED

DESIGNER Wanna-Wee Highway Comm.

ORDER NO. Verbol DWG. NO. 65-39-S10

94-11





ST 6 WF 13.5 x 0'8 1/2 ~ T1  
12 REQ'D.

DRAIN DRI ~ 12 REQ'D.

NOTE: SEE STATE'S DWGS. FOR DRAIN LOCATION

| SHIP |     | BILL OF MATERIAL |                 |                                  |     | DWG. NO. 65-39-S11                             |
|------|-----|------------------|-----------------|----------------------------------|-----|--|
| MARK | NO. | MARK             | SHAPE           | LENGTH                           | WT. | REMARKS  |
| DR1  | 12  |                  | Shop Assy       | —                                | —   |  |
| T1   | 12  |                  | ST6WF13.5       | 0 8 <sup>3</sup> / <sub>4</sub>  |     |  |
|      |     | 24               | P1 FB 1 1/2 x 2 | 0 9 <sup>1</sup> / <sub>2</sub>  |     |  |
|      |     | 24               | P2 do           | 0 8 <sup>5</sup> / <sub>16</sub> |     |  |
|      |     | 12               | D3 6" STD. PIPE | 3 5 <sup>7</sup> / <sub>8</sub>  |     |  |
|      |     | 12               | H 10 x 6        | 0 7                              |     | Std. Steel<br>Eccentric Reducer<br>Req. # 5650 |
|      |     |                  |                 |                                  |     |  |
|      |     |                  |                 |                                  |     |  |
|      |     |                  |                 |                                  |     |  |
|      |     |                  |                 |                                  |     |  |
|      |     |                  |                 |                                  |     |  |
|      |     |                  |                 |                                  |     |  |
|      |     |                  |                 |                                  |     |  |
|      |     |                  |                 |                                  |     |  |
|      |     |                  |                 |                                  |     |  |
|      |     |                  |                 |                                  |     |  |
|      |     |                  |                 |                                  |     |  |
|      |     |                  |                 |                                  |     |  |
|      |     |                  |                 |                                  |     |  |
|      |     |                  |                 |                                  |     |  |
|      |     |                  |                 |                                  |     |  |
|      |     |                  |                 |                                  |     |  |
|      |     |                  |                 |                                  |     |  |
|      |     |                  |                 |                                  |     |  |
|      |     |                  |                 |                                  |     |  |
|      |     |                  |                 |                                  |     |  |
|      |     |                  |                 |                                  |     |  |
|      |     |                  |                 |                                  |     |  |
|      |     |                  |                 |                                  |     |  |
|      |     |                  |                 |                                  |     |  |
|      |     |                  |                 |                                  |     |  |
|      |     |                  |                 |                                  |     |  |
|      |     |                  |                 |                                  |     |  |
|      |     |                  |                 |                                  |     |  |
|      |     |                  |                 |                                  |     |  |
|      |     |                  |                 |                                  |     |  |
|      |     |                  |                 |                                  |     |  |
|      |     |                  |                 |                                  |     |  |
|      |     |                  |                 |                                  |     |  |
|      |     |                  |                 |                                  |     |  |
|      |     |                  |                 |                                  |     |  |
|      |     |                  |                 |                                  |     |  |
|      |     |                  |                 |                                  |     |  |
|      |     |                  |                 |                                  |     |  |
|      |     |                  |                 |                                  |     |  |
|      |     |                  |                 |                                  |     |  |
|      |     |                  |                 |                                  |     |  |
|      |     |                  |                 |                                  |     |  |
|      |     |                  |                 |                                  |     |  |
|      |     |                  |                 |                                  |     |  |
|      |     |                  |                 |                                  |     |  |
|      |     |                  |                 |                                  |     |  |
|      |     |                  |                 |                                  |     |  |
|      |     |                  |                 |                                  |     |  |
|      |     |                  |                 |                                  |     |  |
|      |     |                  |                 |                                  |     |  |
|      |     |                  |                 |                                  |     |  |
|      |     |                  |                 |                                  |     |  |
|      |     |                  |                 |                                  |     |  |
|      |     |                  |                 |                                  |     |  |
|      |     |                  |                 |                                  |     |  |
|      |     |                  |                 |                                  |     |  |
|      |     |                  |                 |                                  |     |  |
|      |     |                  |                 |                                  |     |  |
|      |     |                  |                 |                                  |     |  |
|      |     |                  |                 |                                  |     |  |
|      |     |                  |                 |                                  |     |  |
|      |     |                  |                 |                                  |     |  |
|      |     |                  |                 |                                  |     |  |
|      |     |                  |                 |                                  |     |  |
|      |     |                  |                 |                                  |     |  |
|      |     |                  |                 |                                  |     |  |
|      |     |                  |                 |                                  |     |  |
|      |     |                  |                 |                                  |     |  |
|      |     |                  |                 |                                  |     |  |
|      |     |                  |                 |                                  |     |  |
|      |     |                  |                 |                                  |     |  |
|      |     |                  |                 |                                  |     |  |
|      |     |                  |                 |                                  |     |  |
|      |     |                  |                 |                                  |     |  |
|      |     |                  |                 |                                  |     |  |
|      |     |                  |                 |                                  |     |  |
|      |     |                  |                 |                                  |     |  |
|      |     |                  |                 |                                  |     |  |
|      |     |                  |                 |                                  |     |  |
|      |     |                  |                 |                                  |     |  |
|      |     |                  |                 |                                  |     |  |
|      |     |                  |                 |                                  |     |  |
|      |     |                  |                 |                                  |     |  |
|      |     |                  |                 |                                  |     |  |
|      |     |                  |                 |                                  |     |  |
|      |     |                  |                 |                                  |     |  |
|      |     |                  |                 |                                  |     |  |
|      |     |                  |                 |                                  |     |  |
|      |     |                  |                 |                                  |     |  |
|      |     |                  |                 |                                  |     |  |
|      |     |                  |                 |                                  |     |  |
|      |     |                  |                 |                                  |     |  |
|      |     |                  |                 |                                  |     |  |
|      |     |                  |                 |                                  |     |  |
|      |     |                  |                 |                                  |     |  |
|      |     |                  |                 |                                  |     |  |
|      |     |                  |                 |                                  |     |  |
|      |     |                  |                 |                                  |     |  |
|      |     |                  |                 |                                  |     |  |
|      |     |                  |                 |                                  |     |  |
|      |     |                  |                 |                                  |     |  |
|      |     |                  |                 |                                  |     |  |
|      |     |                  |                 |                                  |     |  |
|      |     |                  |                 |                                  |     |  |
|      |     |                  |                 |                                  |     |  |
|      |     |                  |                 |                                  |     |  |
|      |     |                  |                 |                                  |     |  |
|      |     |                  |                 |                                  |     |  |
|      |     |                  |                 |                                  |     |  |
|      |     |                  |                 |                                  |     |  |
|      |     |                  |                 |                                  |     |  |
|      |     |                  |                 |                                  |     |  |
|      |     |                  |                 |                                  |     |  |
|      |     |                  |                 |                                  |     |  |
|      |     |                  |                 |                                  |     |  |
|      |     |                  |                 |                                  |     |  |
|      |     |                  |                 |                                  |     |  |
|      |     |                  |                 |                                  |     |  |
|      |     |                  |                 |                                  |     |  |
|      |     |                  |                 |                                  |     |  |
|      |     |                  |                 |                                  |     |  |
|      |     |                  |                 |                                  |     |  |
|      |     |                  |                 |                                  |     |  |
|      |     |                  |                 |                                  |     |  |
|      |     |                  |                 |                                  |     |  |
|      |     |                  |                 |                                  |     |  |
|      |     |                  |                 |                                  |     |  |
|      |     |                  |                 |                                  |     |  |
|      |     |                  |                 |                                  |     |  |
|      |     |                  |                 |                                  |     |  |
|      |     |                  |                 |                                  |     |  |
|      |     |                  |                 |                                  |     |  |
|      |     |                  |                 |                                  |     |  |
|      |     |                  |                 |                                  |     |  |
|      |     |                  |                 |                                  |     |  |
|      |     |                  |                 |                                  |     |  |
|      |     |                  |                 |                                  |     |  |
|      |     |                  |                 |                                  |     |  |
|      |     |                  |                 |                                  |     |  |
|      |     |                  |                 |                                  |     |  |
|      |     |                  |                 |                                  |     |  |
|      |     |                  |                 |                                  |     |  |
|      |     |                  |                 |                                  |     |  |
|      |     |                  |                 |                                  |     |  |
|      |     |                  |                 |                                  |     |  |
|      |     |                  |                 |                                  |     |  |
|      |     |                  |                 |                                  |     |  |
|      |     |                  |                 |                                  |     |  |
|      |     |                  |                 |                                  |     |  |
|      |     |                  |                 |                                  |     |  |
|      |     |                  |                 |                                  |     |  |
|      |     |                  |                 |                                  |     |  |
|      |     |                  |                 |                                  |     |  |
|      |     |                  |                 |                                  |     |  |
|      |     |                  |                 |                                  |     |  |
|      |     |                  |                 |                                  |     |  |
|      |     |                  |                 |                                  |     |  |
|      |     |                  |                 |                                  |     |  |
|      |     |                  |                 |                                  |     |  |
|      |     |                  |                 |                                  |     |  |
|      |     |                  |                 |                                  |     |  |
|      |     |                  |                 |                                  |     |  |
|      |     |                  |                 |                                  |     |  |
|      |     |                  |                 |                                  |     |  |
|      |     |                  |                 |                                  |     |  |
|      |     |                  |                 |                                  |     |  |

PROJECT NUMBER F-026-1 (27)

ITEM NO. 702-103

All welds to be made with E70 Electrodes.

SHOP CONNECTIONS: WELDED  
FIELD CONNECTIONS: WELDED  
HOLES: \_\_\_\_\_  
PAINT: PER ME. STATE SPECS.  
RED LEAD OIL & AS NOTED

APR 4-1965

**DRAIN DETAILS**

Bancroft & Martin Inc.  
South Portland, Maine

CENTER STREET CONNECTION  
OVER U.S. ROUTE 1  
BATH, MAINE.

CUSTOMER REED & REED  
DESIGNER M.S.H.C.

ORDER NO. Verbal

|          |         |      |
|----------|---------|------|
| DRAWN    | 4-13-65 | H.L. |
| REVISION |         |      |
| REVISION |         |      |
| REVISION |         |      |

DWG. NO. 65-39-S11  
**94-12**

